

Technical Data Sheet

Peter Kwasny GmbH, Heilbronner Str. 96
74831 Gundelsheim / Germany
Phone: +496269 95-0, Fax: +496269 95-80
www.spraymax.com / www.kwasny.com / info@kwasny.de

SprayTEC Spray fat white 400 ml Art. Nr. 235011



Product

Description / Purpose

SprayTec spray grease white is a heat-resistant high-performance lubricating grease up to +120° C. For the lubrication of all moving parts, Sliding points or friction surfaces and provides the Functionality and longevity of the treated objects safe.

SprayTec Spray Grease white is water-repellent and has special anti-rust additives for provide very good protection against corrosion.

This highly effective lubricant prevents long-term Acid or corrosion damage and eliminated constant squeaking. Universally applicable for the car and motorcycle sector.

Properties

- Can be used universally for all moving parts
- Very good permanent lubrication properties
- Contains high quality anti-rust additives
- Permanently protects against corrosion and wear
- Prevents and eliminates squeaks
- Is water-repellent
- Enables spray tubes on the spray head
precise spraying

Colour

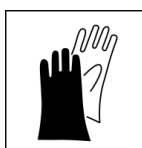
white

Substrate

In the car and motorcycle sector such as sunroofs, trailer hitches, joints, bearings, camshafts. In the industrial and private sector, e.g. Locks, hinges, gears, chains, gears, slide rails, boats, caravans, parasols, etc.

Processing

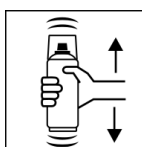
Protection measures



Wear personal protection equipment.
(gloves / goggles)

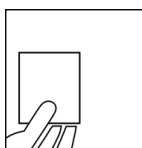
For more information, see safety data sheet.

Shake



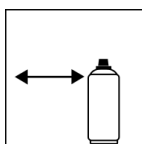
Rinse the can thoroughly for about 30 sec. before use shake.

Spray to test



test spraying

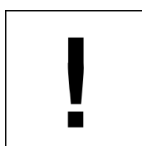
Spraying distance



20 cm - 30 cm

Hold the can as upright as possible.

Processing conditions



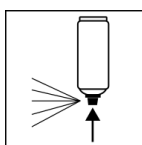
Optimum application at 18° C - 25° C.

The substrate must be dry and dust-free.

Continue

Areas to be treated at a distance of Spray carefully and evenly from a distance of approx. 20 - 30 cm.

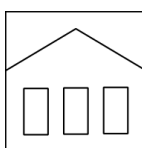
Finish



After use, turn the can upside down and spray the valve completely empty.

Additional Information

Shelf Life



The can is upright, dry and protected from chemical and mechanical influences to be stored and transported between 15 - 25° C.

The safety instructions on the can as well as all legal provisions of the storage location to note.

Disposal



The completely emptied spray cans must be disposed of in the recycling system. Cans with hardened material must be disposed of as special waste.

Note

Before use, the safety instructions must always be read carefully and observed.

The contents in this technical data sheet were created with great care and reflect our current state of knowledge. They provide the user with application-specific information and do not promise certain properties. The information is non-binding and we accept no liability for its integrity, accuracy and completeness. They do not relieve the user of their duty to check the suitability of our product for the intended purpose. The warnings printed on our labels must be respected. Our brands and patents are protected by copyright. All rights reserved We reserve the right to update, amend or supplement the content of the information without prior notice.