

# Technical Data Sheet

Peter Kwasny GmbH, Heilbronner Str. 96  
74831 Gundelsheim / Germany  
Phone: +496269 95-0, Fax: +496269 95-80  
[www.spraymax.com](http://www.spraymax.com) / [www.kwasny.com](http://www.kwasny.com) / [info@kwasny.de](mailto:info@kwasny.de)

## **SprayTEC** **Jump Starter Spray** **400 ml** **Art. Nr. 235010**



### **Product**

#### **Description / Purpose**

SprayTec jump start spray is a high quality Product that solves starting problems in diesel, petrol and two-stroke engines helps quickly and reliably and makes starting much easier.

SprayTec jump starter spray is economical in the application, saves battery and engine and enables an easy and gentle ignition process.

SprayTec jump starter spray enables a safe cold start even at low temperatures.

#### **Properties**

- Universal, for all petrol, diesel and Suitable for two-stroke engines
- Allows a light and gentle ignition process
- Fast and reliable help when starting of engines
- Protects battery and engine
- Provides a safe cold start (even at low temperature)
- Is easy and economical to use
- Enables spray tubes on the spray head precise spraying

### **Substrate**

#### Areas of application in summer:

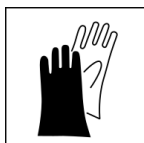
Construction machinery, tractors, power generators,  
Boat engines, petrol lawn mowers, etc.

#### Areas of application in winter:

Gasoline and diesel engines, cars, trucks and buses, construction machinery, agricultural machinery, Motorcycles, mopeds, chainsaws, etc.

## **Processing**

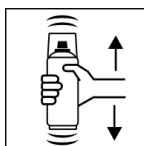
### **Protection measures**



Wear personal protection equipment.  
(gloves / goggles)

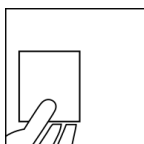
For more information, see safety data sheet.

### **Shake**



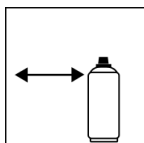
Rinse the can thoroughly for about 30 sec. before use shake.

### **Spray to test**



test spraying

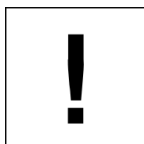
### **Spraying distance**



15 cm - 20 cm

Hold the can as upright as possible.

### **Processing conditions**



Optimum application at 18° C - 25° C.

The substrate must be dry and free of dust and grease.

### **Continue**

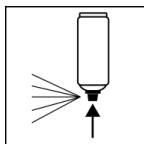
Spray the SprayTec jump start spray directly into the air filter or the intake line and start immediately.

For petrol engines, please only accelerate slightly.

Start diesel engines (without preheating) at full throttle.

DO NOT spray on glow plugs and heating surfaces.

### **Finish**



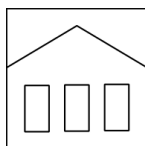
After use, turn the can upside down and spray the valve completely empty.

## **Additional Information**

### **Important Information**

DO NOT spray on glow plugs and heating surfaces.

## Shelf Life



The can is upright, dry and protected from chemical and mechanical influences to be stored and transported between 15 - 25° C.

The safety instructions on the can as well as all legal provisions of the storage location to note.

## Disposal



The completely emptied spray cans must be disposed of in the recycling system. Cans with hardened material must be disposed of as special waste.

## Note

Before use, the safety instructions must always be read carefully and observed.

The contents in this technical data sheet were created with great care and reflect our current state of knowledge. They provide the user with application-specific information and do not promise certain properties. The information is non-binding and we accept no liability for its integrity, accuracy and completeness. They do not relieve the user of their duty to check the suitability of our product for the intended purpose. The warnings printed on our labels must be respected. Our brands and patents are protected by copyright. All rights reserved We reserve the right to update, amend or supplement the content of the information without prior notice.