

# Technical Data Sheet

Peter Kwasny GmbH, Heilbronner Str. 96  
74831 Gundelsheim / Germany  
Phone: +496269 95-0, Fax: +496269 95-80  
www.spraymax.com / www.kwasny.com / info@kwasny.de

## **SprayTEC** **Contact cleaner spray** **400 ml** **Art. Nr. 235002**



### **Product**

#### **Description / Purpose**

SprayTec contact cleaner spray is a special cleaning agent with the highest cleaning and degreasing power for fast, effective cleaning and degreasing of dirty or corroded contacts of all kinds.

It is water-repellent, removes oxide and sulfide layers and other stubborn dirt, such as oil and grease residues, in the field of electrical engineering and electronics. SprayTec contact cleaner spray indirectly reduces the voltage drop through cleaning and increases electrical conductivity.

#### **Properties**

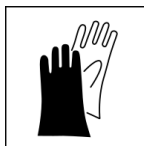
- Special detergents
- Can be used universally on all types of contacts
- High cleaning and degreasing power
- Dissolves stubborn dirt (e.g oil and grease residues)
- Completely removes oxide and sulfide layers
- Reduces voltage drop
- Increases electrical conductivity
- Grabs common construction materials not on

### **Substrate**

For cleaning and degreasing all electrical plug connections and dirty or corroded contacts of all kinds. Also for relays, switchgear, alarm systems, on-board computers, stereo systems, etc.

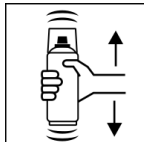
## Processing

### Protection measures



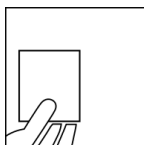
Wear personal protection equipment.  
(gloves / goggles)  
For more information, see safety data sheet.

### Shake



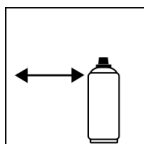
Rinse the can thoroughly for about 30 sec. before use shake.

### Spray to test



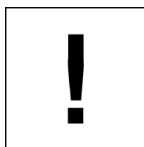
test spraying

### Spraying distance



15 cm - 20 cm  
Hold the can as upright as possible.

### Processing conditions

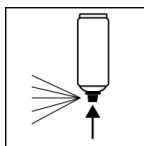


Optimum application at 18° C - 25° C.  
The substrate must be dry and free of dust and grease.

### Continue

Lightly mist the contacts to be treated, then press contacts.  
Please also clean relays, plugs etc. mechanically with a cloth.  
Before switching on the electrical device, allow the solvent to evaporate (approx. 15 min.)

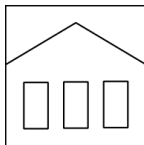
### Finish



After use, turn the can upside down and spray the valve completely empty.

## Additional Information

### Shelf Life



The can is upright, dry and protected from chemical and mechanical influences to be stored and transported between 15 - 25° C.  
The safety instructions on the can as well as all legal provisions of the storage location to note.

## Disposal



The completely emptied spray cans must be disposed of in the recycling system. Cans with hardened material must be disposed of as special waste.

## Note

Before use, the safety instructions must always be read carefully and observed.

The contents in this technical data sheet were created with great care and reflect our current state of knowledge. They provide the user with application-specific information and do not promise certain properties. The information is non-binding and we accept no liability for its integrity, accuracy and completeness. They do not relieve the user of their duty to check the suitability of our product for the intended purpose. The warnings printed on our labels must be respected. Our brands and patents are protected by copyright. All rights reserved We reserve the right to update, amend or supplement the content of the information without prior notice.