

Technical Data Sheet

Peter Kwasny GmbH, Heilbronner Str. 96
74831 Gundelsheim / Germany
Phone: +496269 95-0, Fax: +496269 95-80
www.spraymax.com / www.kwasny.com / info@kwasny.de

SprayTEC
Silicone-Spray
400 ml
Art. Nr. 235001



Product

Description / Purpose

SprayTec silicone spray is a high-quality care and maintenance product for inside and outside, which is used as a colorless lubricant, release agent and care product. SprayTec Silicone Spray cares, protects, lubricates and insulates without being greasy and does not form adhesive, heavy-duty lubricating film. Ideally suited for the areas of cars, motorcycles, Leisure, decoration, garden tools and household. Universally applicable. Gives her plastics original look back.

Properties

- Protects and waterproofs
- Lubricates (e.g. rollers, guides)
- Forms a resilient lubricating film
- Insulates without greasing
- Eliminates friction problems
- Eliminates squeaks and creaks
- Keeps elastics elastic (no sticking and freezing)
- Gives plastics their original appearance return
- Keeps lawn mowers and garden equipment clean
- Can be used indoors and outdoors

Colour

Colorless

Substrate

Rubber, plastic, leather, vinyl, wood, glass and metal parts indoors and outdoors. Ideally suited for the areas of cars, motorcycles, Leisure, decoration, garden tools and household.

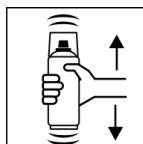
Processing

Protection measures



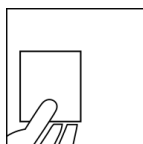
Wear personal protection equipment.
(gloves / goggles)
For more information, see safety data sheet.

Shake



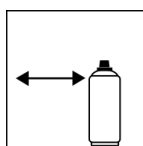
Rinse the can thoroughly for about 30 sec. before use shake.

Spray to test



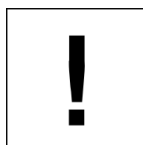
test spraying

Spraying distance



15 cm - 25 cm
Hold the can as upright as possible.

Processing conditions

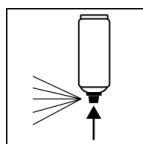


Optimum application at 18° C - 25° C.
The substrate must be dry and free of dust and grease.

Continue

Spray the parts and surfaces to be treated evenly in thin layers and on the Spread surface with a soft cloth.

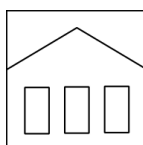
Finish



After use, turn the can upside down and spray the valve completely empty.

Additional Information

Shelf Life



The can is upright, dry and protected from chemical and mechanical influences to be stored and transported between 15 - 25° C.

The safety instructions on the can as well as all legal provisions of the storage location to note.

Disposal



The completely emptied spray cans must be disposed of in the recycling system. Cans with hardened material must be disposed of as special waste.

Note

Before use, the safety instructions must always be read carefully and observed.

The contents in this technical data sheet were created with great care and reflect our current state of knowledge. They provide the user with application-specific information and do not promise certain properties. The information is non-binding and we accept no liability for its integrity, accuracy and completeness. They do not relieve the user of their duty to check the suitability of our product for the intended purpose. The warnings printed on our labels must be respected. Our brands and patents are protected by copyright. All rights reserved We reserve the right to update, amend or supplement the content of the information without prior notice.