

Technical Data Sheet

Peter Kwasny GmbH, Heilbronner Str. 96
74831 Gundelsheim / Germany
Phone: +496269 95-0, Fax: +496269 95-80
www.spraymax.com / www.kwasny.com / info@kwasny.de

Auto-K TUNING
Liquid gum brilliant blue
400 ml
Art. Nr. 233252



Product

Description / Purpose

Liquid Gum is a high-quality, removable spray film for coating, protection, decoration and as a design element for inside and outside. The spray creates a paint-like protective film that can be easily removed at any time.

This is how new and exciting ones are created design options.

Suitable for all smooth, non-absorbent Metal and plastic surfaces.

Properties

- Guaranteed Auto-K quality
- Simple application
- Outstanding adhesion
- Non-slip surface (grip)
- Can be used indoors and outdoors
- High tear resistance when peeled off
- Ideal for rims and bodywork
- Resistant to abrasion, car washes and stone chipping (see application video)
- For home, crafts and hobbies
- Fast drying (45 min. dust dry)
- High tear resistance when peeled off (possible after approx. 2 hours)

Material base

Synthetic rubber (SBR)

Colour

brilliant blue

VOC Value (EU)

95,81

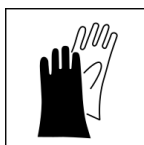
Substrate

Wheel rims, attachments such as exterior mirrors, bicycles, skateboards, laptops, tools and decorative objects.

Surfaces must be solvent-resistant, clean and be dry.
Compatibility before use check with the ground.

Processing

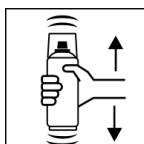
Protection measures



Wear personal protection equipment.
(gloves / goggles)

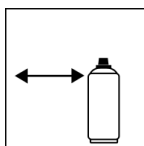
For more information, see safety data sheet.

Shake



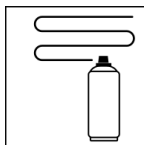
Shake can thoroughly for 2 minutes
- starting from when the mixing balls are heard.

Spraying distance



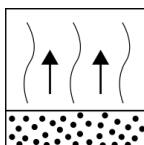
Ideal spray distance: 10 cm - 20 cm
Hold the can as upright as possible.

Spray passes



For easier peelability, apply 5 layers:
approx. 80 - 100 µm
With neon colors and blue to develop the Luminosity
necessarily submit 2 layers of white.
Wood must be pre-coated with clear lacquer to
achieve a smooth, non-absorbent surface.

Flash-off time



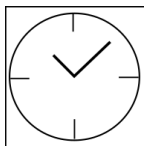
Flash-off time.
approx. 5 - 10 min between spray passes.

Processing conditions



Optimum application at 18° C - 25° C.
The substrate must be dry and free of dust and
grease.

Drying



dust dry: approx. 45 min
waterproof / rainproof: after approx. 90 min.
removable: after approx. 2 hours

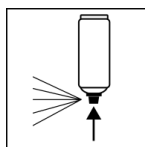
Continue

Paintwork:

1. Evenly spray about 5 thin ones closed layers, so that one sufficient foil layer is reached. Between the individual spray passes are Drying times of 5 - 10 min each. to comply with.
2. After 2 - 3 spray coats there is still no covering layer achieved because the product "translucent" is set. Through 5 layers becomes a high Tear strength achieved that the simple allowing the spray film to be pulled off.
3. Be sure to remove the masking tapes while the last layer is still wet.

Can be painted over with itself after approx. 2 hours. Drying (observe the intermediate flash-off time).

Finish



After finishing the painting process can turn over and spray valve empty to turn on to avoid sticking of the spray valve.

Additional Information

Important Information

Danger!

Not with solvent-based products (e.g. degreaser containing petrol).

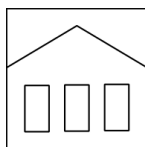
Please note!

In order to achieve the desired luminous and color effect Neon shades (green, orange and pink) and by Achieving brilliant blue is necessarily a "white" Pre-coating or a white base necessary!

We recommend the opaque coating with Auto-K Liquid Gum white (art. no.: 233 251) with two layers. Then the desired color applied.

With the neon colors (pink, orange, green) it can changes in color when exposed to sunlight come.

Shelf Life



The can is upright, dry and protected from chemical and mechanical influences to be stored and transported between 15 - 25° C.

The safety instructions on the can as well as all legal provisions of the storage location to note.

Disposal



The completely emptied spray cans must be disposed of in the recycling system. Cans with hardened material must be disposed of as special waste.

Note

Before use, the safety instructions must always be read carefully and observed.

The contents in this technical data sheet were created with great care and reflect our current state of knowledge. They provide the user with application-specific information and do not promise certain properties. The information is non-binding and we accept no liability for its integrity, accuracy and completeness. They do not relieve the user of their duty to check the suitability of our product for the intended purpose. The warnings printed on our labels must be respected. Our brands and patents are protected by copyright. All rights reserved We reserve the right to update, amend or supplement the content of the information without prior notice.