



# Technical Data Sheet

Peter Kwasny GmbH, Heilbronner Str. 96  
74831 Gundelsheim / Germany  
Phone: +496269 95-0, Fax: +496269 95-80  
www.spraymax.com / www.kwasny.com / info@kwasny.de

**Auto-K Effect**  
**Brilliant metallic violet**  
**400 ml**  
**Art. Nr. 233111**



## Product

### Description / Purpose

Auto-K Brilliant Metallic is a quick-drying special paint that can be used to quickly paint objects made of sheet metal, metal and plastic beautify.

This high-quality brilliant metallic paint evaluates the Painted parts optically and gives them a effective appearance.

The product is inside and can be used outside.

Gloss and weather resistance is achieved by overcoating with clear coat.

### Properties

- To achieve shiny effects
- Upgrading of sheet metal, metal and plastic (according to use of Auto-K plastic adhesion promoter)
- Very productive
- Rapid drying
- Good thorough drying
- Shiny effect
- Free of heavy metals: no lead, cadmium, chrome

**Material base**

Acrylic resin

**Colour**

Catalunya violet

**VOC Value (EU)**

92,94

## Substrate

Metal, sheet

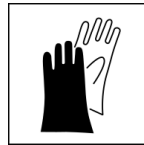
(cleaned, sanded, free of dust and grease)

Plastic

(check beforehand for compatibility and after using Auto-K plastic adhesion promoter art. no. 233 055)

## Processing

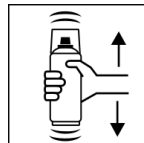
### Protection measures



Wear personal protection equipment.  
(gloves / goggles)

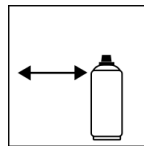
For more information, see safety data sheet.

### Shake



Shake can thoroughly for 2 minutes  
- starting from when the mixing balls are heard.

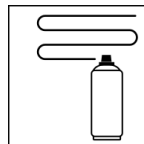
### Spraying distance



15 cm - 25 cm

Hold the can as upright as possible.

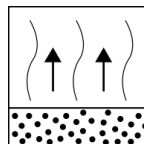
### Spray passes



2 spray coats: approx. 40 - 50 µm

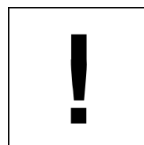
Crossing means spraying on a first horizontal and then a vertical layer.

### Flash-off time



Flash-off time approx. 5 min between  
spray passes.

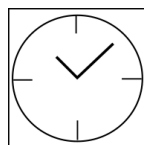
### Processing conditions



Optimum application at 18° C - 25° C.

The substrate must be dry and free of dust and grease.

### Drying



dust dry: approx. 5 - 10 min

dry to touch: after 30 - 40 min

fully dried: after ca. 24 hour

### Continue

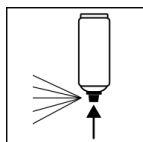
#### Paintwork metal:

1. Auto-K Anti-Corrosion Primer
2. Auto-K Brilliant metallic
3. Auto-K protective clear coat

Paintwork plastic:

1. Auto-K Plastic Adhesion Promoter
  2. Auto-K Brilliant metallic
  3. Auto-K protective clear coat
- Recoat with itself at any time.  
With all Auto-K paints at any time.

**Finish**



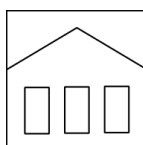
After finishing the painting process can turn over and spray valve empty to turn on to avoid sticking of the spray valve.

**Additional Information**

**Important Information**

Do not spray on synthetic resin painted surfaces, as the paint may pull up.  
Top coat with Auto-K Protective Clear Coat to achieve protection and shine.

**Shelf Life**



The can is upright, dry and protected from chemical and mechanical influences to be stored and transported between 15 - 25° C.

The safety instructions on the can as well as all legal provisions of the storage location to note.

**Disposal**



The completely emptied spray cans must be disposed of in the recycling system. Cans with hardened material must be disposed of as special waste.

**Note**

Before use, the safety instructions must always be read carefully and observed.

The contents in this technical data sheet were created with great care and reflect our current state of knowledge. They provide the user with application-specific information and do not promise certain properties. The information is non-binding and we accept no liability for its integrity, accuracy and completeness. They do not relieve the user of their duty to check the suitability of our product for the intended purpose. The warnings printed on our labels must be respected. Our brands and patents are protected by copyright. All rights reserved We reserve the right to update, amend or supplement the content of the information without prior notice.