

# Technical Data Sheet

Peter Kwasny GmbH, Heilbronner Str. 96  
74831 Gundelsheim / Germany  
Phone: +496269 95-0, Fax: +496269 95-80  
www.spraymax.com / www.kwasny.com / info@kwasny.de

**Auto-K Special**  
**Plastic paint spray Peugeot FZL gris foncé**  
**400 ml**  
**Art. Nr. 233102**



## Product

### Description / Purpose

Auto-K Plastic Spray Paint is a fast drying special paint for plastic parts. This allows all parts on the car to be removed Beautify hard plastic, polyester and polycarbonate.  
Applicable to plastic-bumpers, -Exterior mirrors, -spoilers, etc. The Auto-K Plastic adhesion promoter (No. 233055) is the ideal primer.

### Properties

- Easy processing
- Good adhesion, very productive
- Fast drying

### Material base

Nitro combination resins

### Colour

dark grey

### VOC Value (EU)

87,14

## Substrate

Hard plastic, polyester, polycarbonate  
All plastics must be checked for compatibility check towards.  
Do not use on dissolvable plastics.  
For solvent resistant materials only.

## Processing

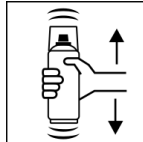
### Protection measures



Wear personal protection equipment.  
(gloves / goggles)

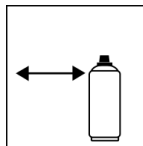
For more information, see safety data sheet.

### Shake



Shake can thoroughly for 2 minutes  
- starting from when the mixing balls are heard.

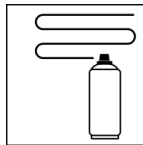
### Spraying distance



15 cm - 25 cm,

Hold the can as upright as possible.

### Spray passes

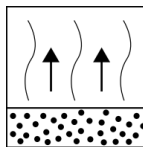


2 spray coats: approx. 50 - 60 µm

Start spraying outside of the Paint surface and apply evenly crosswise several thin layers.

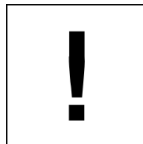
Crossing means spraying on a first horizontal and then a vertical layer.

### Flash-off time



Flash time: approx. 2 - 3 min between each spray coat.

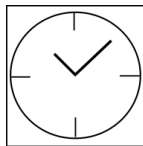
### Processing conditions



Optimum application at 18° C - 25° C.

The substrate must be dry and free of dust and grease.

### Drying



dust dry: approx. 30 min

dry to touch: approx. 1 hour

fully dried: approx. 24 hours

### Continue

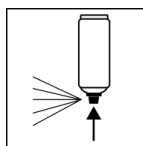
#### Paintwork:

1. Auto-K Plastic Adhesion Promoter

2. Auto-K Plastic paint spray

Recoatable with itself after 15 min.

### Finish



After finishing the painting process can turn over and spray valve empty to turn on to avoid sticking of the spray valve.

## Additional Information

### Important Information

#### ATTENTION!

Please note before use:

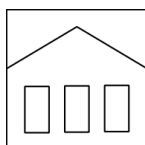
Be sure to check all plastics for compatibility.

Do not use on dissolvable plastics.

For solvent resistant materials only.

Do not spray on synthetic resin painted surfaces, as the paint may pull up.

### Shelf Life



The can is upright, dry and protected from chemical and mechanical influences to be stored and transported between 15 - 25° C.

The safety instructions on the can as well as all legal provisions of the storage location to note.

### Disposal



The completely emptied spray cans must be disposed of in the recycling system. Cans with hardened material must be disposed of as special waste.

### Note

Before use, the safety instructions must always be read carefully and observed.

The contents in this technical data sheet were created with great care and reflect our current state of knowledge. They provide the user with application-specific information and do not promise certain properties. The information is non-binding and we accept no liability for its integrity, accuracy and completeness. They do not relieve the user of their duty to check the suitability of our product for the intended purpose. The warnings printed on our labels must be respected. Our brands and patents are protected by copyright. All rights reserved We reserve the right to update, amend or supplement the content of the information without prior notice.