

# Technical Data Sheet

Peter Kwasny GmbH, Heilbronner Str. 96  
74831 Gundelsheim / Germany  
Phone: +496269 95-0, Fax: +496269 95-80  
www.spraymax.com / www.kwasny.com / info@kwasny.de

## Auto-K Special Brake caliper paint spray black 400 ml Art. Nr. 233077



### Product

#### Description / Purpose

For colored effects in the visible brake area. Brake calipers and other parts are visible through the rims in high contrast.

Easy and fast applied, the spray ensures something special racing look.

#### Properties

- Achievement of color effects in the visible brake area
- Upgrading and tuning for racing look
- Good course
- High solids content
- Very productive
- Rapid drying
- Good thorough drying
- Temperature resistant up to approx. 100° C

#### Material base

Synthetic resins

#### Colour

black

#### VOC Value (EU)

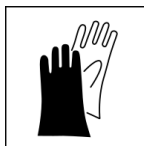
78,17

### Substrate

Brake calipers, cast iron and aluminum.

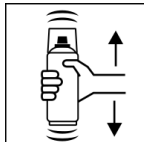
## Processing

### Protection measures



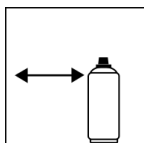
Wear personal protection equipment.  
(gloves / goggles)  
For more information, see safety data sheet.

### Shake



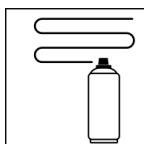
Shake can thoroughly for 2 minutes  
- starting from when the mixing balls are heard.

### Spraying distance



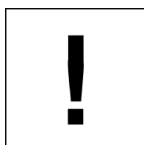
15 cm - 25 cm

### Spray passes



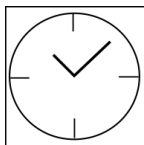
2 spray coats: approx. 40 - 50  $\mu$ m  
Crossing means spraying on a first horizontal and then a vertical layer.

### Processing conditions



Optimum application at 18° C - 25° C.  
The substrate must be dry and free of dust and grease.

### Drying



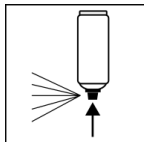
dust dry: after 15 - 20 min  
dry to touch: after 1 - 2 hour  
fully dried: after 6 - 8 days

### Continue

#### Paintwork:

No pre-treatment with primers and no post-treatment with further cover and clear coats required.  
Can be painted over with itself within 6 hours.

### Finish



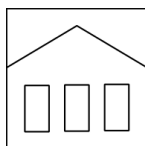
After finishing the painting process can turn over and spray valve empty to turn on to avoid sticking of the spray valve.

## Additional Information

### Important Information

No pre-treatment with primers and no post-treatment with further cover and clear coats required.

## Shelf Life



The can is upright, dry and protected from chemical and mechanical influences to be stored and transported between 15 - 25° C.

The safety instructions on the can as well as all legal provisions of the storage location to note.

## Disposal



The completely emptied spray cans must be disposed of in the recycling system. Cans with hardened material must be disposed of as special waste.

## Note

Before use, the safety instructions must always be read carefully and observed.

The contents in this technical data sheet were created with great care and reflect our current state of knowledge. They provide the user with application-specific information and do not promise certain properties. The information is non-binding and we accept no liability for its integrity, accuracy and completeness. They do not relieve the user of their duty to check the suitability of our product for the intended purpose. The warnings printed on our labels must be respected. Our brands and patents are protected by copyright. All rights reserved We reserve the right to update, amend or supplement the content of the information without prior notice.