

Technical Data Sheet

Peter Kwasny GmbH, Heilbronner Str. 96
74831 Gundelsheim / Germany
Phone: +496269 95-0, Fax: +496269 95-80
www.spraymax.com / www.kwasny.com / info@kwasny.de

Auto-K Basic
2-layer clear coat gloss
400 ml
Art. Nr. 233066



Product

Description / Purpose

Auto-K 2-coat clear coat is specially designed the 2-layer base coats of the Auto-K Spray Set coordinated with the assortment. To increase gloss and weather resistance, the top coat layers can be painted over.

Properties

- Fast drying
- Brilliant gloss
- Very productive
- Good chemical resistance

Material base

Acrylic resins

Colour

transparent

Gloss level

gloss

VOC Value (EU)

87,18

Substrate

Painted sheets, metals
(cleaned, free of dust and grease)

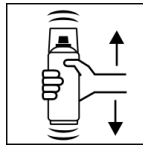
Processing

Protection measures



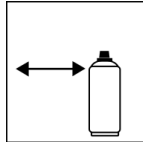
Wear personal protection equipment.
(gloves / goggles)
For more information, see safety data sheet.

Shake



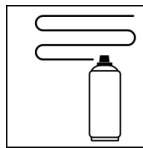
Shake can thoroughly for 2 minutes
- starting from when the mixing balls are heard.

Spraying distance



15 cm - 25 cm,
Hold the can as upright as possible.

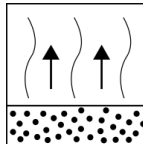
Spray passes



2 spray coats: approx. 30 - 40 µm

Start spraying outside of the Paint surface and wear evenly in Cross several thin coats on.
Cross coat means spraying on a first horizontal and then one vertical layer.

Flash-off time



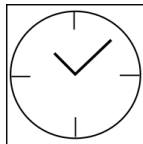
Flash time: approx. 2 - 3 min between each spray coat.

Processing conditions



Optimum application at 18° C - 25° C.
The substrate must be dry and free of dust and grease.

Drying



dust dry: 5 - 10 min
dry to touch: 30 - 40 min.
fully dried: 24 hours

Continue

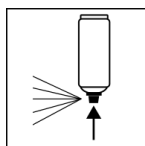
Coating structure metal / sheet metal:

1. Auto-K Anti-Corrosion Primer
2. Auto-K Filler / Primer
3. Auto-K 2-layer base coat
4. Auto-K 2-coat clear coat

After drying:

Recoat with itself and all paints at any time.
Generally do not paint over synthetic resin paints, as the paint may pull up.

Finish



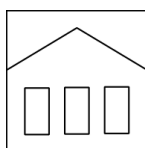
After finishing the painting process can turn over and spray valve empty to turn on to avoid sticking of the spray valve.

Additional Information

Important Information

Do not spray on synthetic resin painted surfaces, as the paint may pull up.

Shelf Life



The can is upright, dry and protected from chemical and mechanical influences to be stored and transported between 15 - 25° C.

The safety instructions on the can as well as all legal provisions of the storage location to note.

Disposal



The completely emptied spray cans must be disposed of in the recycling system. Cans with hardened material must be disposed of as special waste.

Note

Before use, the safety instructions must always be read carefully and observed.

The contents in this technical data sheet were created with great care and reflect our current state of knowledge. They provide the user with application-specific information and do not promise certain properties. The information is non-binding and we accept no liability for its integrity, accuracy and completeness. They do not relieve the user of their duty to check the suitability of our product for the intended purpose. The warnings printed on our labels must be respected. Our brands and patents are protected by copyright. All rights reserved We reserve the right to update, amend or supplement the content of the information without prior notice.