



# Technical Data Sheet

Peter Kwasny GmbH, Heilbronner Str. 96  
74831 Gundelsheim / Germany  
Phone: +496269 95-0, Fax: +496269 95-80  
www.spraymax.com / www.kwasny.com / info@kwasny.de

**Auto-K Basic**  
**Rust converter**  
**400 ml**  
**Art. Nr. 233063**



## Product

### Description / Purpose

Rust converter and epoxy primer in one. For effective rust conversion and simultaneous priming on metallic substrates. Application in the field of car, DIY, craft and industry. Simply spray the transparent active ingredient directly onto the grate. Rust is converted into a black-grey protective layer which, after drying, is painted over with 1K top coats can be. Available as 400 ml spray paint and 250 ml liquid. Simply spray on the Auto-K rust converter (Art. no. 233063). Apply the liquid emulsion (Art. no. 745041) with a brush or roller.

### Properties

- Rust converter and primer
- High efficiency
- Effective rust removal
- Easy and quick processing
- Ideal for vehicles, DIY, crafts and industry
- Can be painted over with 1K top coats (color)

**Material base**

Special resins

**Colour**

transparent

**VOC Value (EU)**

94,6

## Substrate

Iron, ferrous metals, sheet metal, steel, sheet steel  
(remove loose rust first)

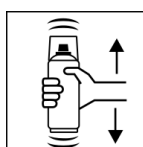
## Processing

### Protection measures



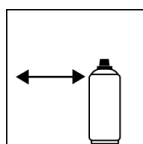
Wear personal protection equipment.  
(gloves / goggles)  
For more information, see safety data sheet.

### Shake



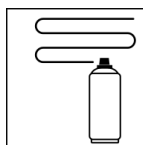
Shake can thoroughly for 2 minutes

### Spraying distance



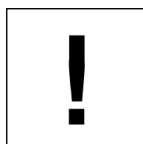
10 cm - 20 cm,  
Hold the can as upright as possible.

### Spray passes



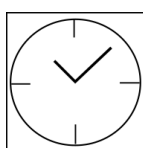
3 - 4 coats in thin coats: approx. 10 - 12 µm

### Processing conditions



Optimum application at 18° C - 25° C.  
The substrate must be dry and free of dust and grease.

### Drying



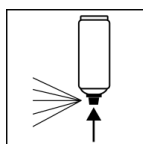
fully dried: approx. 12 - 24 hours  
can be painted over: after 24 hours

### Continue

#### Paintwork:

1. Auto-K Basic Rust Converter Spray or Liquid rust converter.
2. 1K top coat (shade).  
Our recommendation Auto-K car paint spray.
3. Auto-K Protective Clear Coat (optional)  
Recoatable with itself at any time.  
With 1K top coat (color) after 24 hours drying.

### Finish



After finishing the painting process can turn over and spray valve empty to turn on to avoid sticking of the spray valve.

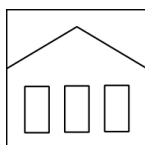
## Additional Information

### Important Information

Before starting work, the surfaces or objects to be painted must be cleaned and sealed accordingly degrease. Remove loose rust.

Do not spray on synthetic resin painted surfaces, as the paint may pull up.

### Shelf Life



The can is upright, dry and protected from chemical and mechanical influences to be stored and transported between 15 - 25° C.

The safety instructions on the can as well as all legal provisions of the storage location to note.

### Disposal



The completely emptied spray cans must be disposed of in the recycling system. Cans with hardened material must be disposed of as special waste.

### Note

Before use, the safety instructions must always be read carefully and observed.

The contents in this technical data sheet were created with great care and reflect our current state of knowledge. They provide the user with application-specific information and do not promise certain properties. The information is non-binding and we accept no liability for its integrity, accuracy and completeness. They do not relieve the user of their duty to check the suitability of our product for the intended purpose. The warnings printed on our labels must be respected. Our brands and patents are protected by copyright. All rights reserved We reserve the right to update, amend or supplement the content of the information without prior notice.