

Technical Data Sheet

Peter Kwasny GmbH, Heilbronner Str. 96
74831 Gundelsheim / Germany
Phone: +496269 95-0, Fax: +496269 95-80
www.spraymax.com / www.kwasny.com / info@kwasny.de

Auto-K Basic
Zinc aluminum spray
400 ml
Art. Nr. 233057



Product

Description / Purpose

The Auto-K Zinc-Alu-Spray is particularly suitable as a corrosion protection for water and weather-resistant vulnerable constructions, for repairing damaged zinc surfaces and for coating inner panel edges during spot welding.

Properties

- Corrosion protection for water and weather-prone structures
- For repairing damaged zinc surfaces
- For coating inner sheet metal edges spot welding
- Applicable for heating systems, pipelines, Steel superstructures, radiators, railings, crash barriers etc.
- Fast drying, very productive
- Good chemical resistance

Material base

Acrylate resins

Colour

silver grey

VOC Value (EU)

77,69

Substrate

Iron, steel, metals (cleaned and ground)

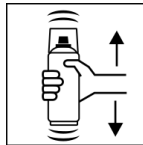
Processing

Protection measures



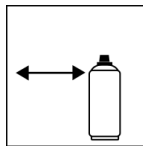
Wear personal protection equipment.
(gloves / goggles)
For more information, see safety data sheet.

Shake



Shake can thoroughly for 2 minutes
- starting from when the mixing balls are heard.

Spraying distance



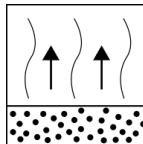
15 cm - 25 cm,
Hold the can as upright as possible.

Spray passes



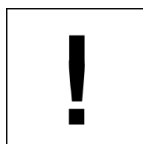
2 spray coats: approx. 30 - 40 µm
Start spraying outside of the Paint surface and wear evenly in Cross several thin coats on.
Cross coat means spraying on a first horizontal and then one vertical layer.

Flash-off time



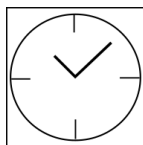
Flash time: approx. 2 - 3 min between each spray coat. To avoid overspray is for ensure adequate air supply.

Processing conditions



Optimum application at 18° C - 25° C.
The substrate must be dry and free of dust and grease.

Drying



dust dry: 5 - 10 min
dry to touch: 30 - 40 min.
fully dried: 24 hours

Continue

Paintwork:

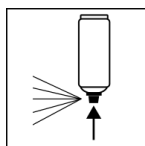
No pre-treatment with primers and no after-treatment with further top coats and clear coats necessary.

Recoatable:

With yourself after about 10 min.

With all Auto-K paints, a test piece should first be used to check whether the zinc-aluminum layer can be painted over with the desired top coat.

Finish



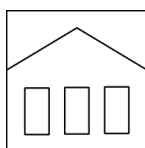
After finishing the painting process can turn over and spray valve empty to turn on to avoid sticking of the spray valve.

Additional Information

Important Information

Do not spray on synthetic resin painted surfaces, as the paint may pull up.

Shelf Life



The can is upright, dry and protected from chemical and mechanical influences to be stored and transported between 15 - 25° C.

The safety instructions on the can as well as all legal provisions of the storage location to note.

Disposal



The completely emptied spray cans must be disposed of in the recycling system. Cans with hardened material must be disposed of as special waste.

Note

Before use, the safety instructions must always be read carefully and observed.

The contents in this technical data sheet were created with great care and reflect our current state of knowledge. They provide the user with application-specific information and do not promise certain properties. The information is non-binding and we accept no liability for its integrity, accuracy and completeness. They do not relieve the user of their duty to check the suitability of our product for the intended purpose. The warnings printed on our labels must be respected. Our brands and patents are protected by copyright. All rights reserved We reserve the right to update, amend or supplement the content of the information without prior notice.