

Technical Data Sheet

Peter Kwasny GmbH, Heilbronner Str. 96
74831 Gundelsheim / Germany
Phone: +496269 95-0, Fax: +496269 95-80
www.spraymax.com / www.kwasny.com / info@kwasny.de

Auto-K Basic Plastic Adhesion Promoter 400 ml Art. Nr. 233055



Product

Description / Purpose

The Auto-K plastic adhesion promoter improves the adhesion of the subsequent coat of paint on plastic surfaces, e.g. spoilers, plastic exterior mirrors and bumpers.

Properties

- For plastic parts such as (PP, EPDM, ABS, PC, PPO, PA, PVC, PUR, PBT(B), UP-GF).
- Improves the adhesion of the subsequent paint on spoilers, Plastic exterior mirrors and on plastic bumpers.
- Ensures ideal adhesion
- Fast drying
- Slightly silvery pigmentation
- Very productive
- Easy processing

Material base

Specialty polymers

Colour

transparent (slightly silvery pigmentation)

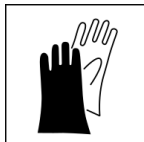
Substrate

All standard plastic parts such as PP, EPDM, ABS, PC, PPO, PA, PVC, PUR, PBT(B), UP-GF.

The area to be painted must be dry, dust-free and be fat free.

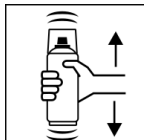
Processing

Protection measures



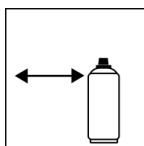
Wear personal protection equipment.
(gloves / goggles)
For more information, see safety data sheet.

Shake



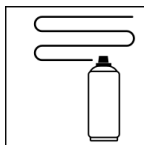
Shake can thoroughly for 2 minutes
- starting from when the mixing balls are heard.

Spraying distance



15 cm - 25 cm,
Hold the can as upright as possible.

Spray passes



1 spray coats: approx. 3 - 5 μ m

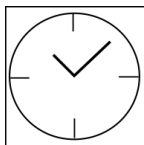
Start spraying outside of the Paint surface and wear evenly in Cross several thin coats on.
Cross coat means spraying on a first horizontal and then one vertical layer.

Processing conditions



Optimum application at 18° C - 25° C.
The substrate must be dry and free of dust and grease.

Drying



dust dry: 15 min
dry to touch: approx. 30 - 40 min.

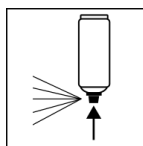
Continue

1. Plastic substrate with detergent from fat and remove dust.
2. Possibly with 600-grit wet sandpaper grind.
3. A cloister of plastic adhesion promoter Instruct.
4. Primed with Auto-K plastic spray paint
Paint over the surface.

After drying:

Recoatable with itself after 15 min.
With all Auto-K paints after 15 min.

Finish



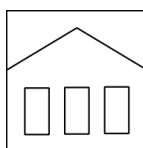
After finishing the painting process can turn over and spray valve empty to turn on to avoid sticking of the spray valve.

Additional Information

Important Information

Do not spray on synthetic resin painted surfaces, as the paint may pull up.

Shelf Life



The can is upright, dry and protected from chemical and mechanical influences to be stored and transported between 15 - 25° C.

The safety instructions on the can as well as all legal provisions of the storage location to note.

Disposal



The completely emptied spray cans must be disposed of in the recycling system. Cans with hardened material must be disposed of as special waste.

Note

Before use, the safety instructions must always be read carefully and observed.

The contents in this technical data sheet were created with great care and reflect our current state of knowledge. They provide the user with application-specific information and do not promise certain properties. The information is non-binding and we accept no liability for its integrity, accuracy and completeness. They do not relieve the user of their duty to check the suitability of our product for the intended purpose. The warnings printed on our labels must be respected. Our brands and patents are protected by copyright. All rights reserved We reserve the right to update, amend or supplement the content of the information without prior notice.