

Technical Data Sheet

Peter Kwasny GmbH, Heilbronner Str. 96
74831 Gundelsheim / Germany
Phone: +496269 95-0, Fax: +496269 95-80
www.spraymax.com / www.kwasny.com / info@kwasny.de

Auto-K Special Rim spray protective crystal silver 400 ml Art. Nr. 233037



Product

Description / Purpose

The abrasion-resistant nitro combination paint with particularly high opacity is hard-wearing, permanently resistant to car washes and offers the rim Long-term protection against stone chips and road salt. With Auto-K rim sprays, rims can be left without embellish great expenditure of time and against protect against corrosion. Especially for protection suitable for aluminum rims.

Properties

- Particularly high hiding power
- Resistant to road salt, stone chips, etc.
- abrasion resistant
- Car wash resistant

Material base

Nitro combination resins

Colour

crystal silver

VOC Value (EU)

88,67

Substrate

metal rims, aluminum rims
(cleaned, free of dust and grease)

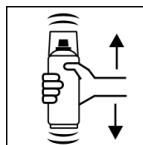
Processing

Protection measures



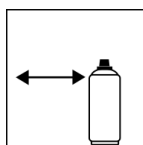
Wear personal protection equipment.
(gloves / goggles)
For more information, see safety data sheet.

Shake



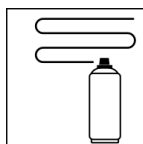
Shake can thoroughly for 2 minutes
- starting from when the mixing balls are heard.

Spraying distance



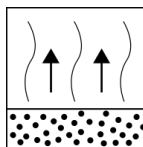
15 cm - 25 cm,
Hold the can as upright as possible.

Spray passes



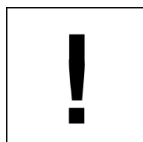
2 spray coats: approx. 50 - 60 µm
Crossing means spraying on a first horizontal and then a vertical layer.

Flash-off time



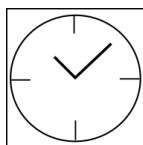
Flash time: approx. 2 - 3 min between each spray coat.

Processing conditions



Optimum application at 18° C - 25° C.
The substrate must be dry and free of dust and grease.

Drying



dust dry: 10 - 15 min
dry to touch: approx. 2 - 3 hours
fully dried: approx. 12 hours

Continue

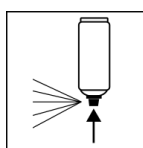
Paintwork:

1. Auto-K Anti-corrosion primer
2. Auto-K Filler / Primer or Auto-K Spray Filler
3. Auto-K Rim spray

Recoatable with itself at any time.

With clear coat at any time.

Finish



After finishing the painting process can turn over and spray valve empty to turn on to avoid sticking of the spray valve.

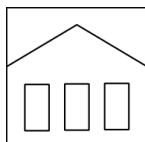
Additional Information

Important Information

Spray rim spray onto the cleaned rim.

Generally do not paint over synthetic resin paints, as the paint may pull up.

Shelf Life



The can is upright, dry and protected from chemical and mechanical influences to be stored and transported between 15 - 25° C.

The safety instructions on the can as well as all legal provisions of the storage location to note.

Disposal



The completely emptied spray cans must be disposed of in the recycling system. Cans with hardened material must be disposed of as special waste.

Note

Before use, the safety instructions must always be read carefully and observed.

The contents in this technical data sheet were created with great care and reflect our current state of knowledge. They provide the user with application-specific information and do not promise certain properties. The information is non-binding and we accept no liability for its integrity, accuracy and completeness. They do not relieve the user of their duty to check the suitability of our product for the intended purpose. The warnings printed on our labels must be respected. Our brands and patents are protected by copyright. All rights reserved We reserve the right to update, amend or supplement the content of the information without prior notice.