

# Technical Data Sheet

Peter Kwasny GmbH, Heilbronner Str. 96  
74831 Gundelsheim / Germany  
Phone: +496269 95-0, Fax: +496269 95-80  
www.spraymax.com / www.kwasny.com / info@kwasny.de

**Auto-K Effect**  
**Chrom effect**  
**400 ml**  
**Art. Nr. 233031**



## Product

### Description / Purpose

Auto-K Chrom Effect is a quick drying acrylic paint, which is characterized by very good opacity, high light and temperature resistance and maximum yield. To enhance and beautify individuals car parts. It gives any smooth surface a metallic chrom look. Chrom effect is limited weather resistance, but not abrasion resistant. Do not paint over with clear coat!

### Properties

- Fast drying
- High light and temperature resistance
- Very productive
- Good history
- Good hiding power
- High chemical resistance
- Metallic luster with high reflectivity
- Not abrasion resistant
- Cap does not match content

### Material base

Acrylic resin

### Colour

chrom

### VOC Value (EU)

83,36

## Substrate

Metal, sheet

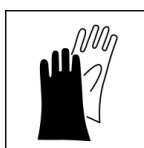
(cleaned, sanded, free of dust and grease)

Plastic

(check beforehand for compatibility and after using Auto-K plastic adhesion promoter art. no. 233 055)

## Processing

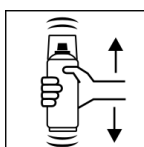
### Protection measures



Wear personal protection equipment.  
(gloves / goggles)

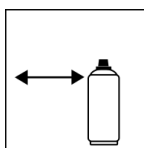
For more information, see safety data sheet.

### Shake



Shake can thoroughly for 2 minutes  
- starting from when the mixing balls are heard.

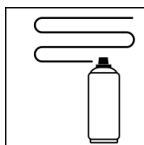
### Spraying distance



15 cm - 25 cm

Hold the can as upright as possible.

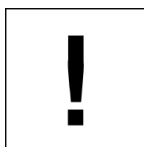
### Spray passes



1 spray coat: approx. 15 - 20 µm

Crossing means spraying on a first horizontal and then a vertical layer.

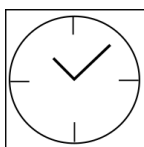
### Processing conditions



Optimum application at 18° C - 25° C.

The substrate must be dry and free of dust and grease.

### Drying



dust dry: after 20 min

dry to touch: after 30 - 40 min

fully dried: after ca. 1 hour

### Continue

#### Paintwork metal:

1. Auto-K Anti-Corrosion Primer
2. Auto-K Filler / Primer
3. Auto-K chrom effect

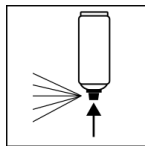
#### Paintwork plastic:

1. Auto-K Plastic Adhesion Promoter
2. Auto-K chrom effect

Recoatable with itself at any time.

With all Auto-K paints at any time.

## Finish



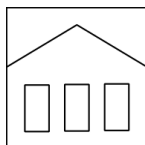
After finishing the painting process can turn over and spray valve empty to turn on to avoid sticking of the spray valve.

## Additional Information

### Important Information

Caution! Do not spray over the chrom effect with clear lacquer, otherwise the special chrom effect will be lost.

### Shelf Life



The can is upright, dry and protected from chemical and mechanical influences to be stored and transported between 15 - 25° C.

The safety instructions on the can as well as all legal provisions of the storage location to note.

### Disposal



The completely emptied spray cans must be disposed of in the recycling system. Cans with hardened material must be disposed of as special waste.

### Note

Before use, the safety instructions must always be read carefully and observed.

The contents in this technical data sheet were created with great care and reflect our current state of knowledge. They provide the user with application-specific information and do not promise certain properties. The information is non-binding and we accept no liability for its integrity, accuracy and completeness. They do not relieve the user of their duty to check the suitability of our product for the intended purpose. The warnings printed on our labels must be respected. Our brands and patents are protected by copyright. All rights reserved We reserve the right to update, amend or supplement the content of the information without prior notice.