

Technical Data Sheet

Peter Kwasny GmbH, Heilbronner Str. 96
 74831 Gundelsheim / Germany
 Phone: +496269 95-0, Fax: +496269 95-80
 www.spraymax.com / www.kwasny.com / info@kwasny.de

Auto-K Basic Protective clear coat gloss 400 ml Art. Nr. 233017



Product

Description / Purpose

The Auto-K protective clear coat is a high-quality, transparent special combination paint that offers gloss and surface sealing. Almost all objects made of sheet metal, metal and plastic can be successfully protected against corrosion, protect stone chips and dirt.

Properties

- Fast drying
- Brilliant gloss or satin gloss
- Good chemical resistance

Material base

Nitro combination resins

Colour

transparent

Gloss level

gloss

VOC Value (EU)

88,67

Substrate

Sheet metal, metal, wood, glass, ceramic and various plastics (cleaned, free of dust and grease)

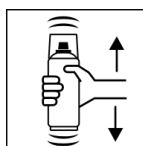
Processing

Protection measures



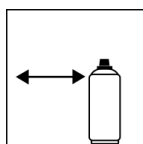
Wear personal protection equipment.
 (gloves / goggles)
 For more information, see safety data sheet.

Shake



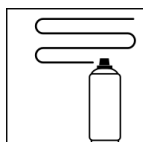
Shake can thoroughly for 2 minutes
- starting from when the mixing balls are heard.

Spraying distance



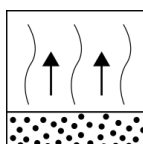
15 cm - 25 cm,
Hold the can as upright as possible.

Spray passes



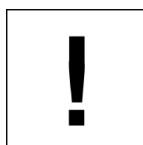
2 spray coats: approx. 30 - 40 µm
Start spraying outside of the Paint surface and wear evenly in Cross several thin coats on.
Cross coat means spraying on a first horizontal and then one vertical layer.

Flash-off time



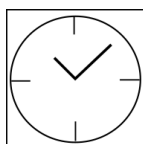
Flash time: approx. 2 - 3 min between each spray coat.

Processing conditions



Optimum application at 18° C - 25° C.
The substrate must be dry and free of dust and grease.

Drying



dust dry: 5 - 10 min
dry to touch: 30 - 40 min.
fully dried: 24 hours

Continue

Coating structure wood:

1. Reason for admission
2. Top coat
3. Protective clear coat with high or satin gloss

Coating structure metal:

1. Auto-K Anti-Corrosion Primer
2. Auto-K Filler / Primer
3. Top coat
4. Protective clear coat with high or satin gloss

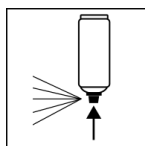
Coating structure ceramic:

1. Auto-K Anti-Corrosion Primer
2. Top coat
3. Protective clear coat with high or satin gloss

Recoatable with itself at any time.

With all Auto-K paints at any time.

Finish



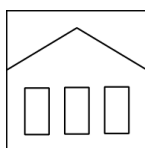
After finishing the painting process can turn over and spray valve empty to turn on to avoid sticking of the spray valve.

Additional Information

Important Information

Do not spray on synthetic resin painted surfaces, as the paint may pull up.

Shelf Life



The can is upright, dry and protected from chemical and mechanical influences to be stored and transported between 15 - 25° C.

The safety instructions on the can as well as all legal provisions of the storage location to note.

Disposal



The completely emptied spray cans must be disposed of in the recycling system. Cans with hardened material must be disposed of as special waste.

Note

Before use, the safety instructions must always be read carefully and observed.

The contents in this technical data sheet were created with great care and reflect our current state of knowledge. They provide the user with application-specific information and do not promise certain properties. The information is non-binding and we accept no liability for its integrity, accuracy and completeness. They do not relieve the user of their duty to check the suitability of our product for the intended purpose. The warnings printed on our labels must be respected. Our brands and patents are protected by copyright. All rights reserved We reserve the right to update, amend or supplement the content of the information without prior notice.